

DONALD H. DURRAH
Appraisal Service

*Serving All Of Your
Appraisal Needs...*

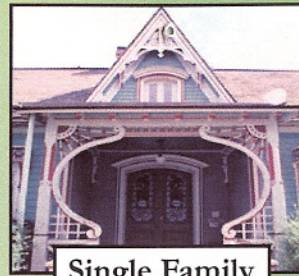
- Mortgage Refinancing
- Buyers & Sellers
- Investors
- Builders & Developers
- Removal of PMI
- Financing & Credit
- Appraisal Review
- Appraisal Consulting
- Commercial Property
- Mortgage Loans
- Reverse Mortgage
- Transfer of Ownership
- Attorneys
- Divorces
- Estate Settlement
- Estate Planning
- Feasibility Analysis
- Insurance Claims
- Tax Appeals
- Probate
- Condemnation
- Right of Way
- Eminent Domain
Procedures

*Call Us Or
Visit Our Website Today!!*

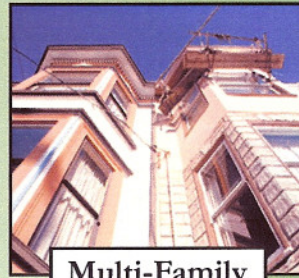
DONALD H. DURRAH

11309 Wade Park Avenue
Cleveland, OH 44106
Office: 216.231.2564
Fax: 216.229.6658

Email: durrahs5@ameritech.net
www.durrahtheappraiser.com

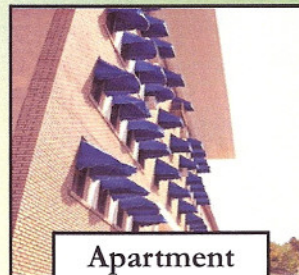


Single Family

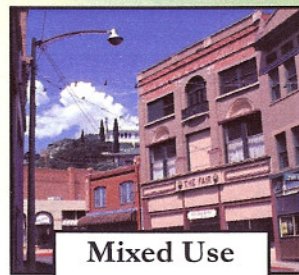


Multi-Family

**USPAP
Instructor**



Apartment
Commercial



Mixed Use
Commercial

DONALD H. DURRAH
Appraisal Service

*Over 40 Years Experience
in Real Estate and
Appraisal.*

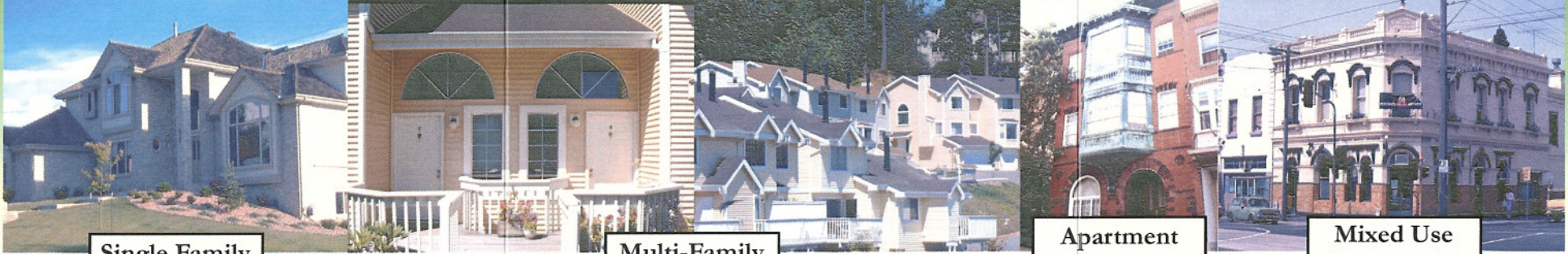
**DONALD H.
DURRAH**

Certified General Appraiser #2002022598
AQB Certified USPAP Instructor #10198
FHA Certified Appraiser

11309 Wade Park Avenue
Cleveland, OH 44106
Office: 216.231.2564
Fax: 216.229.6658

Email: durrahs5@ameritech.net
www.durrahtheappraiser.com

We Do It All ... For You!



Single Family

Multi-Family

Apartment
Commercial

Mixed Use
Commercial

BENEFITS OF CHOOSING US:

- AQB Certified USPAP Instructor (#10198)
- 203(k) Approved Appraiser
- FHA Approved Appraiser
- Over 40 Years Of Real Estate Experience
- E & O Insurance

WE OFFER:

- 48 Hour Turn Around*
- Email Delivery
- Digital Service
- Sample Appraisals Available On CD Or Email
- Free Half-Day USPAP Seminar Available

*Standard appraisals will be delivered within 48 hours of viewing (Weekends and holidays are not included).

*Please Fax All Appraisal Requests
To (216) 229-6658, Or Visit Our Website,
www.durrahtheappraiser.com.*

WE SERVICE THE FOLLOWING AREAS:

- Cuyahoga County
- Summit County
- Lake County
- Lorain County

**For More Information,
Please Visit Our Website:
www.durrahtheappraiser.com**

DONALD H. DURRAH
Appraisal Service

**All Payments Are Due At The Door
Unless Prior Arrangements
Have Been Made.**

FEE SCHEDULE:

- Single Family..... \$300.00
- Single Family (FHA)..... \$350.00
- 2-4 Family..... \$500.00
- 2-4 Family (FHA)..... \$600.00

The Following Are Negotiable:

- Commercial Restricted
- Driveby (704) Inspection Fee
- Limited Additional Copies
- Counties Other Than Home County

*All Appraisals Are Completed To
Comply With The Uniform Standards
Of Professional Appraisal Practice,
(USPAP). The Current Year Applies.*